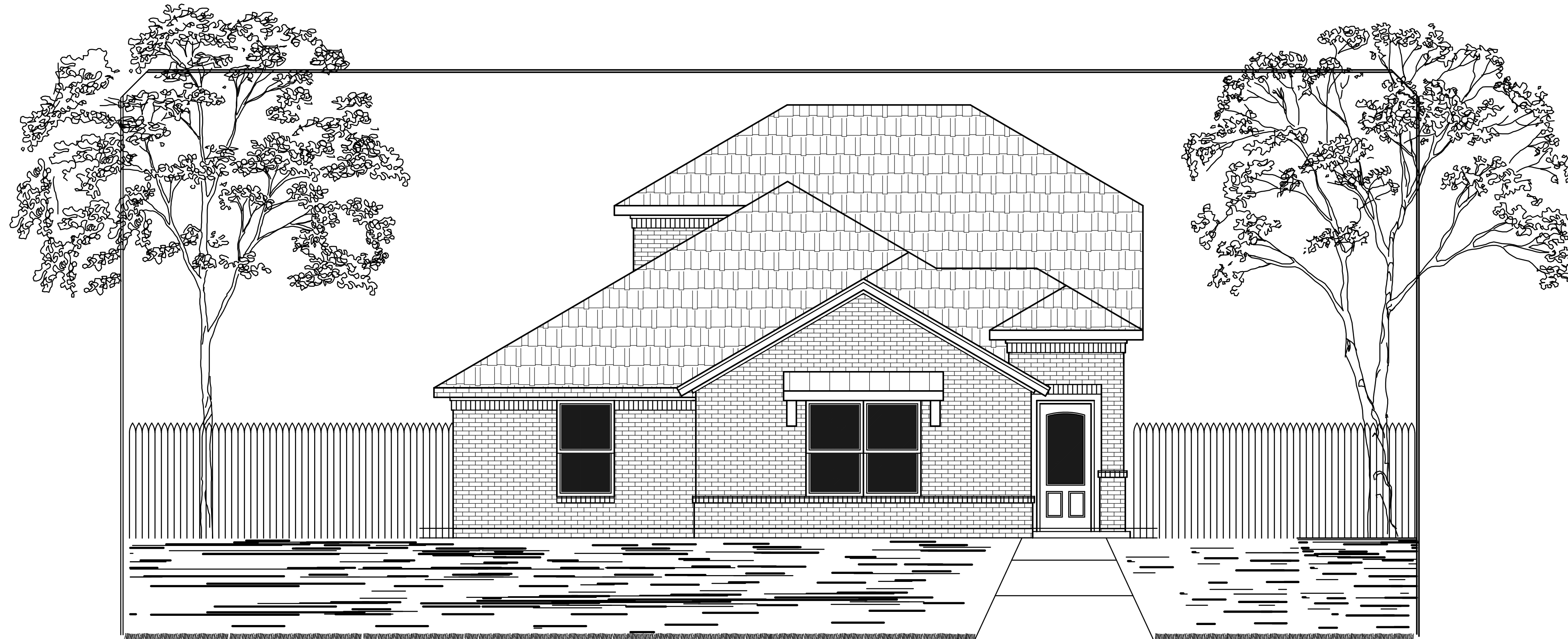


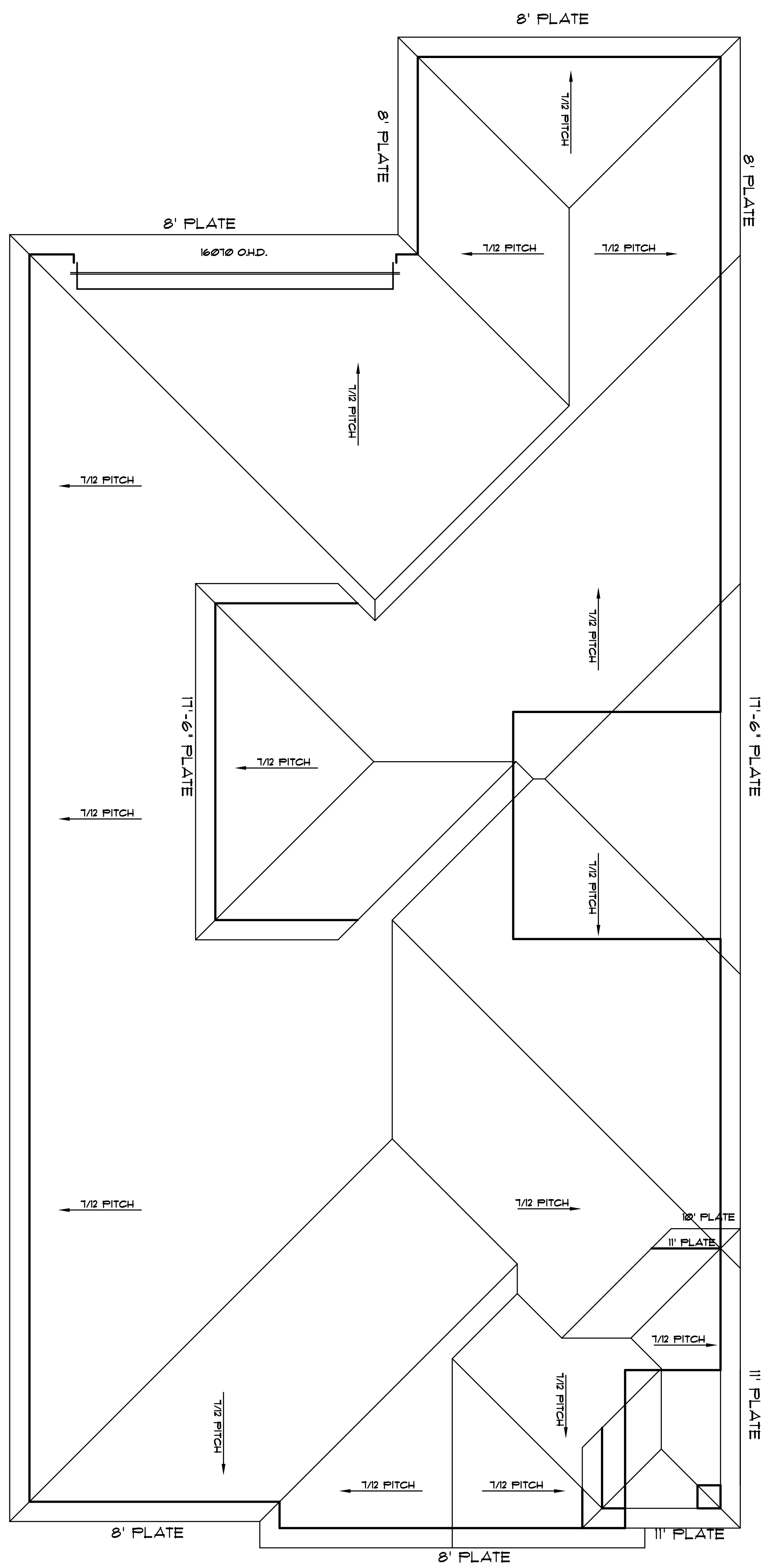
A NEW RESIDENCE BY:

| B & M AMARILLO HOMES

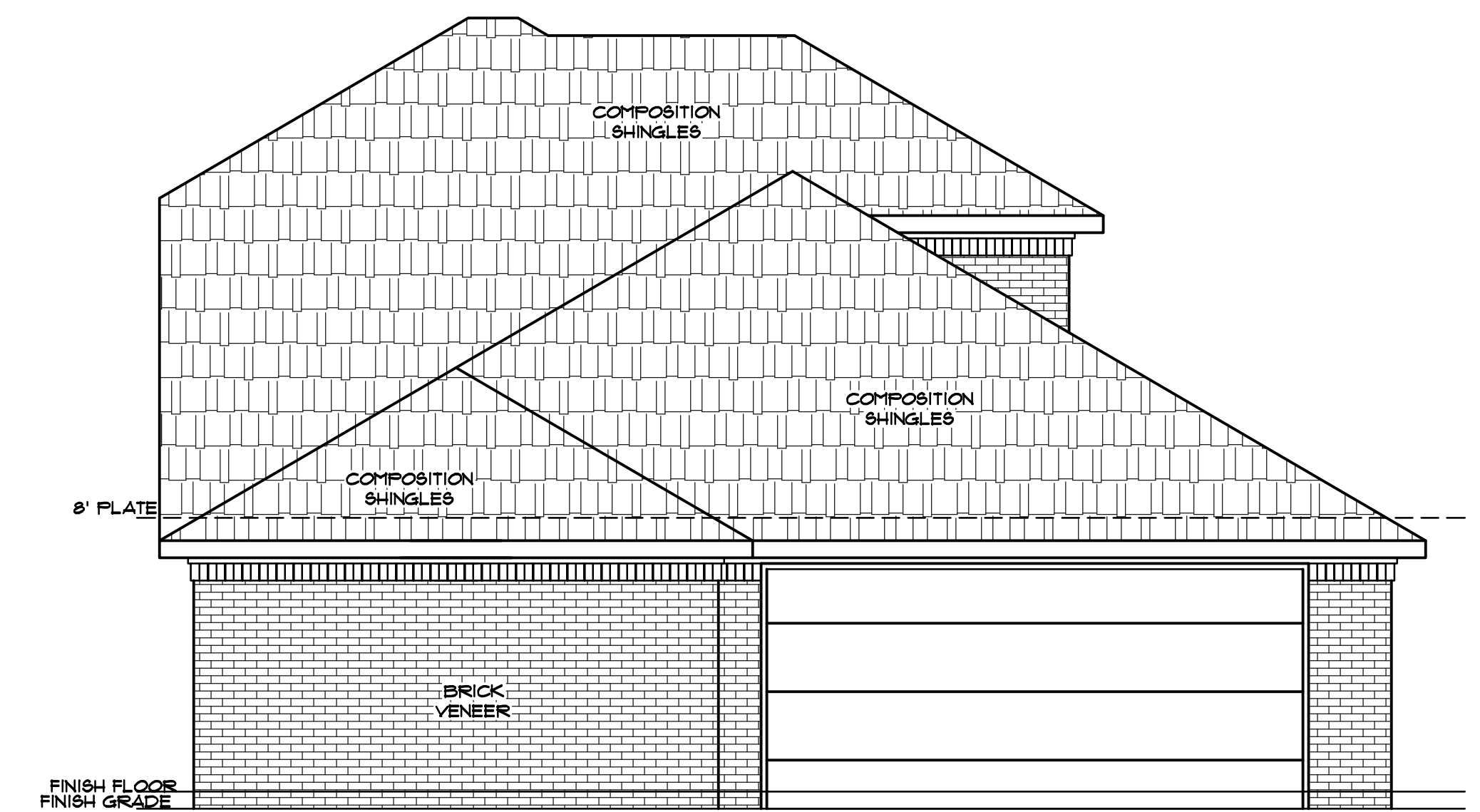


| 7605 WOODFORD AVE.

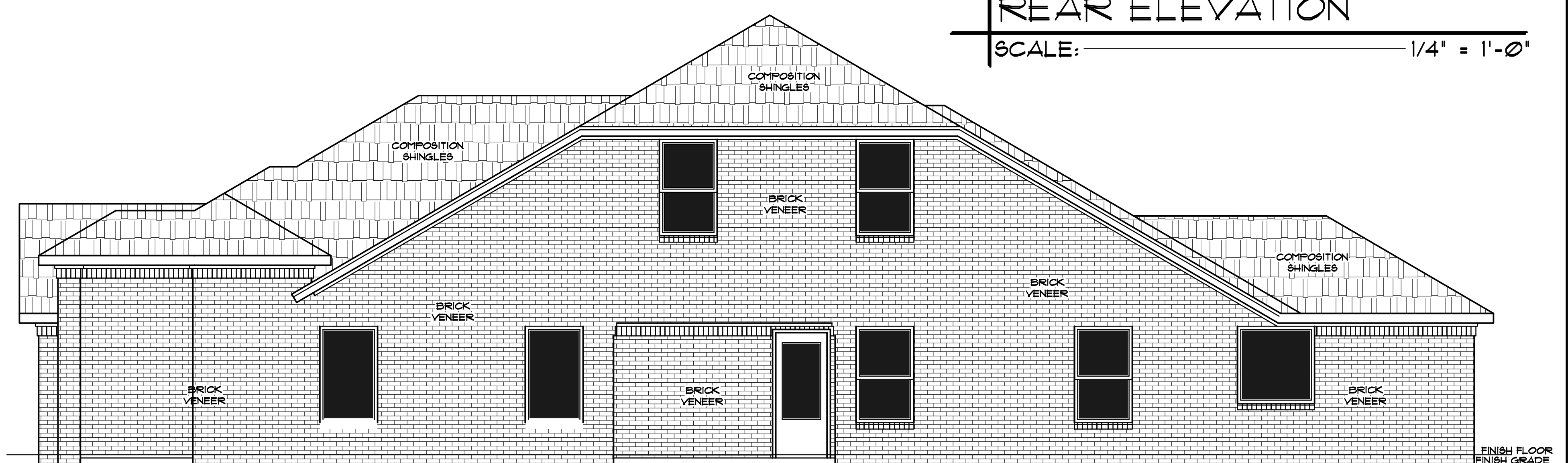
AMARILLO, TX



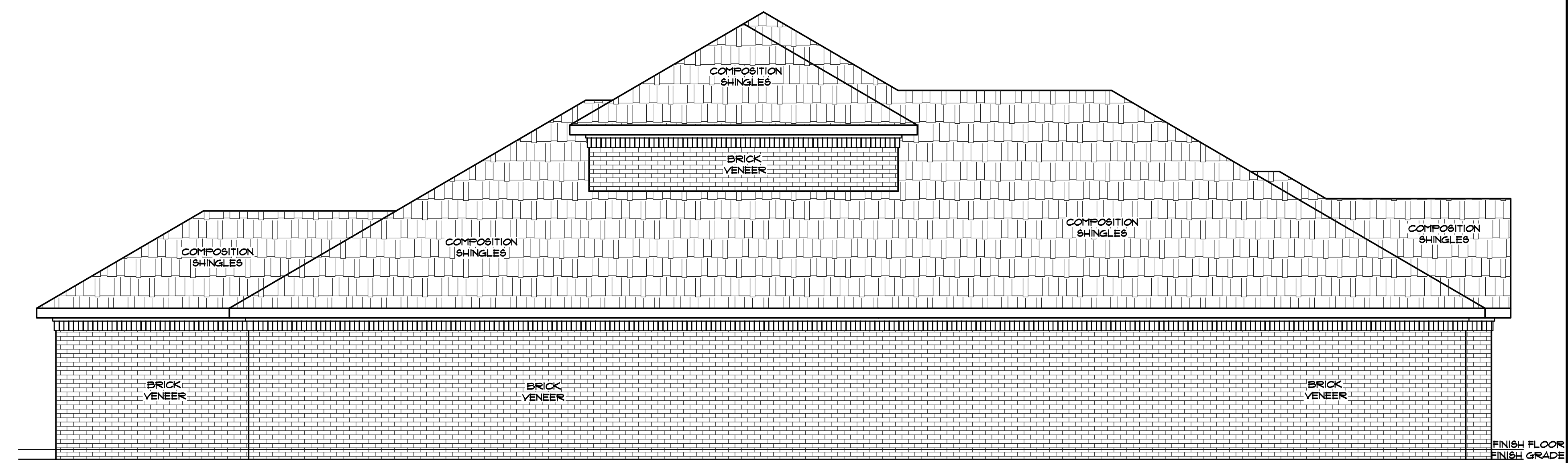
**ROOF PLAN**  
SCALE: 1/4" = 1'-0"



**REAR ELEVATION**  
SCALE: 1/4" = 1'-0"



**RIGHT ELEVATION**  
SCALE: 1/4" = 1'-0"



**LEFT ELEVATION**  
SCALE: 1/4" = 1'-0"

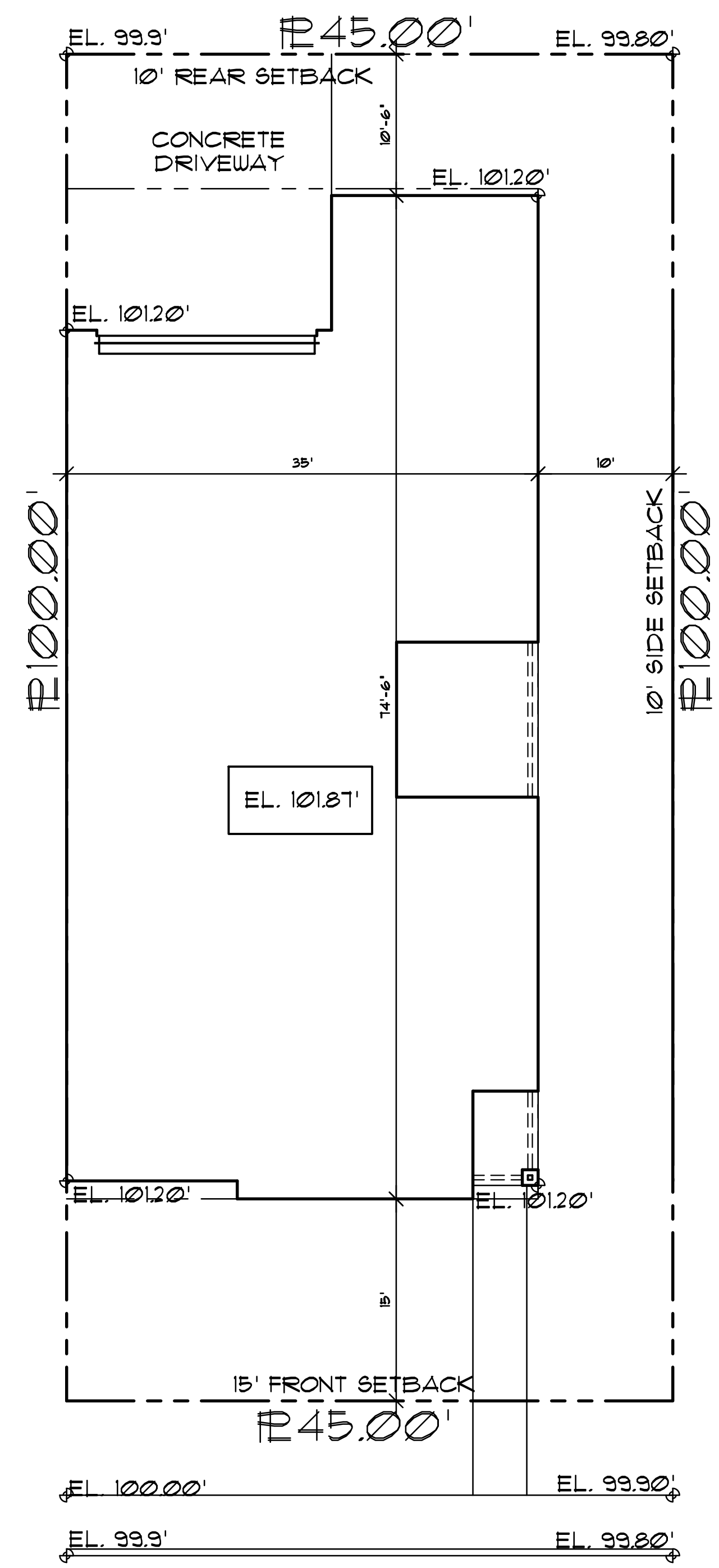
**DRAWN BY:**  
RENAISSANCE DESIGN  
ZACHARY SALDIYAR  
6666 AMARILLO BLVD. W  
AMARILLO, TX  
19106 (806)510-3489

**A NEW RESIDENCE BY:**  
B&M AMARILLO HOMES  
1605 WOODFORD AVE.  
AMARILLO, TX

**REVISIONS:**


**REVISIONS:**


**PAGE#**  
A2  
**PLAN #** 1268-1G4  
**DATE** 4/22/22



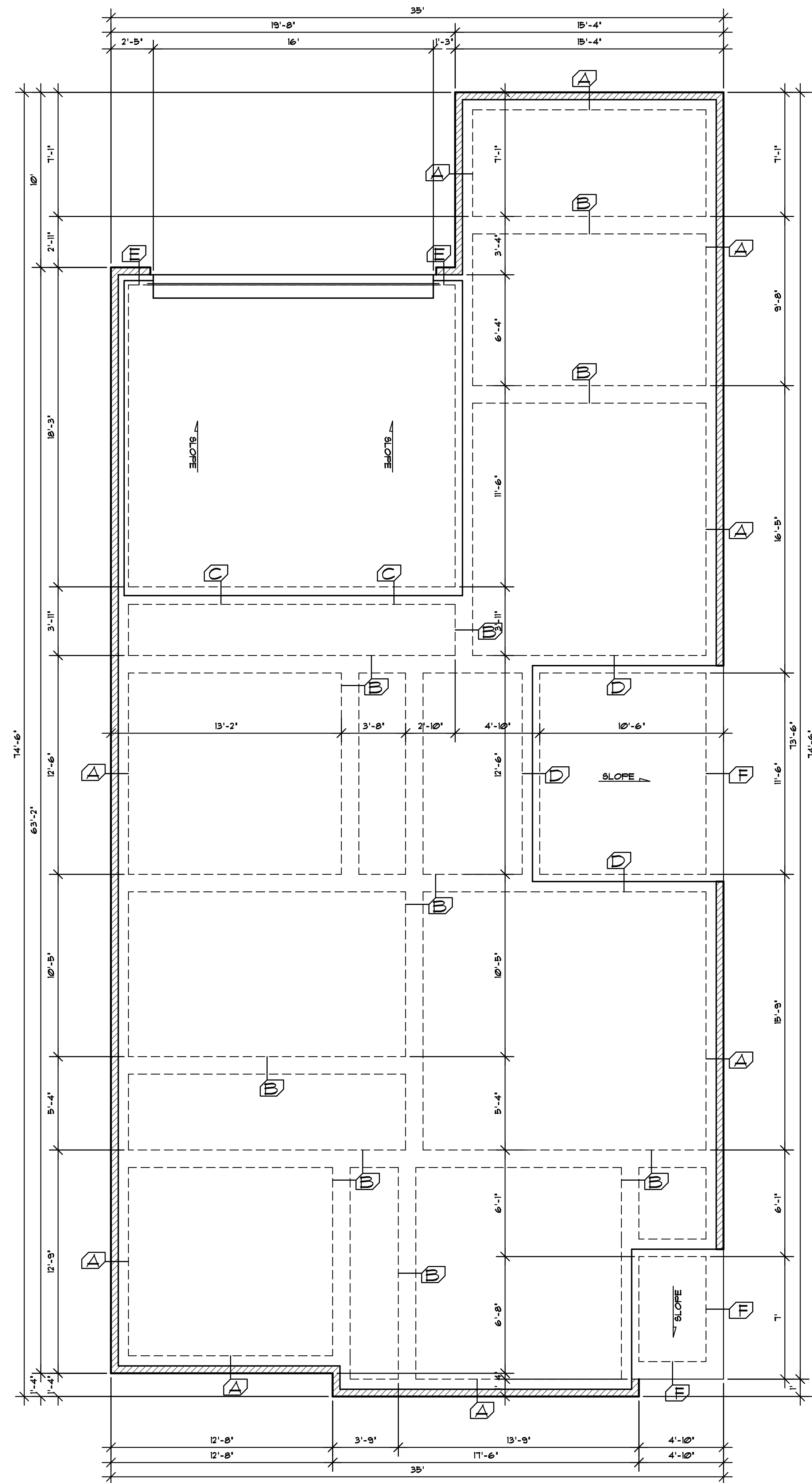
7605 WOODFORD AVE.

LOT 18, BLOCK 2,  
CITY VIEW ESTATES UNIT #20  
AMARILLO, RANDALL COUNTY, TEXAS



SITE PLAN

SCALE: 1/8" = 1'-0"



FOUNDATION PLAN

SCALE: 1/4" = 1'-0"

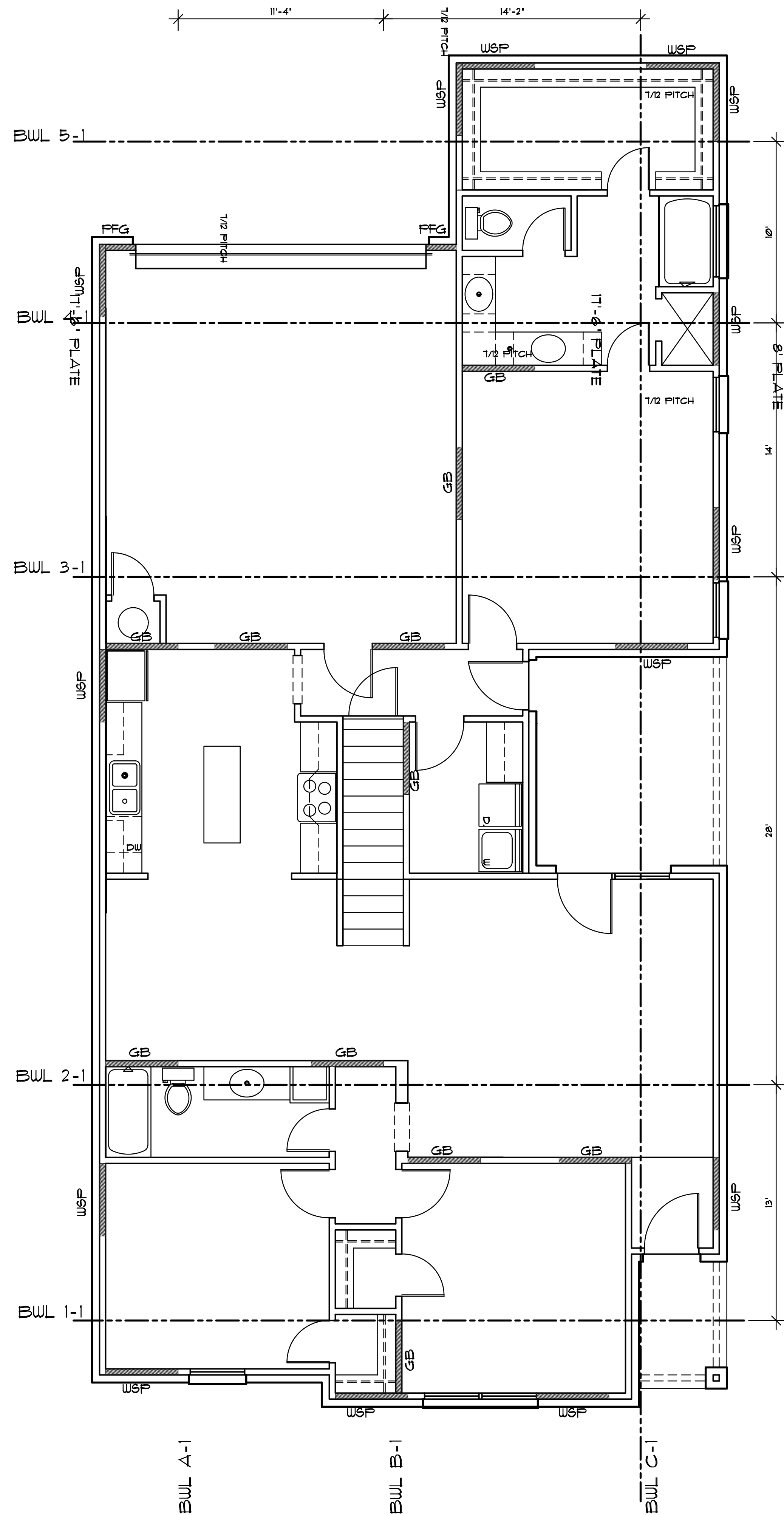
DRAWN BY:  
**RENAISSANCE DESIGN**  
ZACHARY SALDIYAR  
6666 AMARILLO BLVD. W  
AMARILLO, TX  
79106 (806) 510-3489

A NEW RESIDENCE BY:  
**B&M AMARILLO HOMES**  
1605 WOODFORD AVE.  
AMARILLO, TX

REVISIONS:

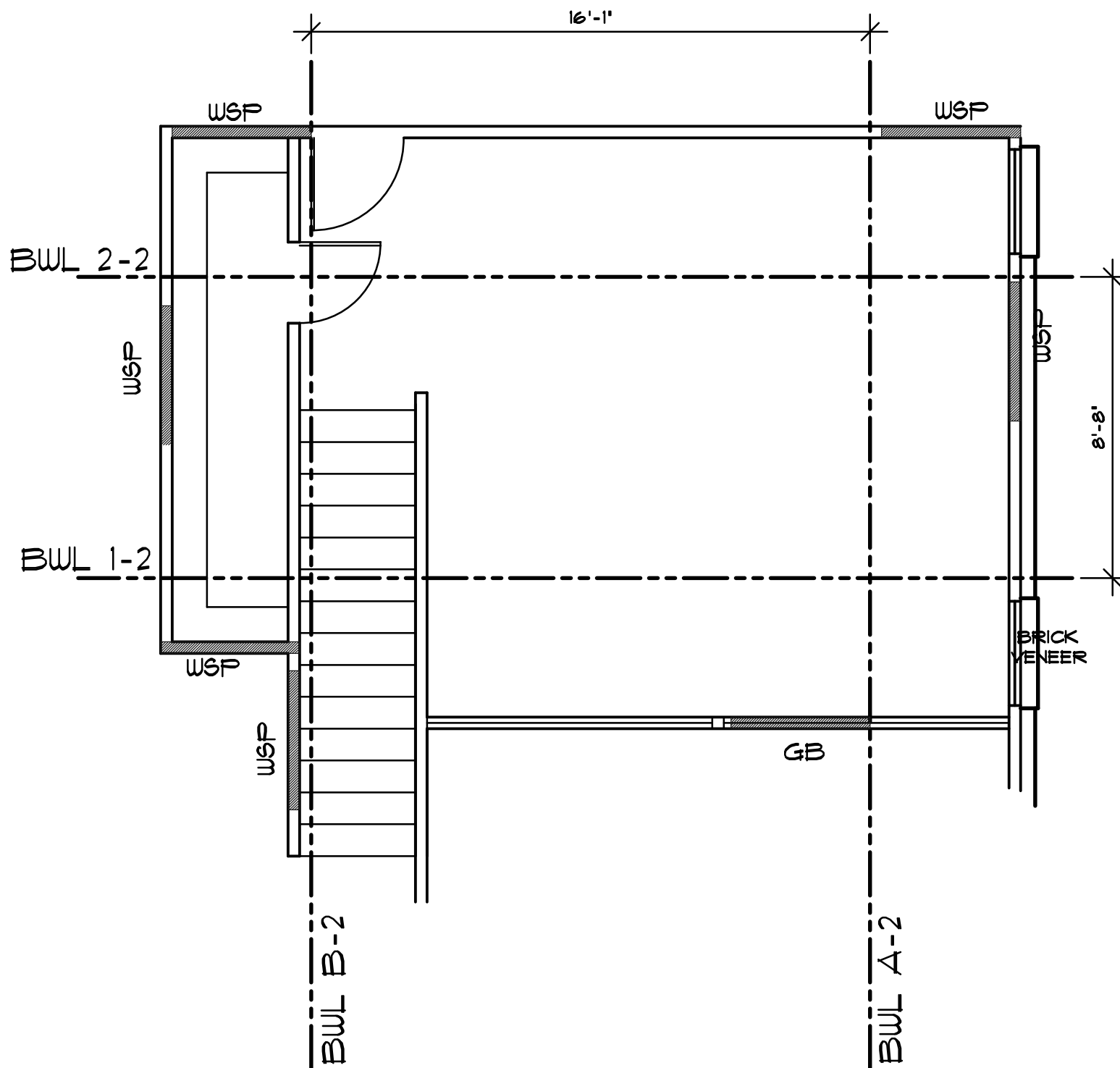
PAGE#  
A3

PLAN #1268-1G4  
DATE 4/22/22



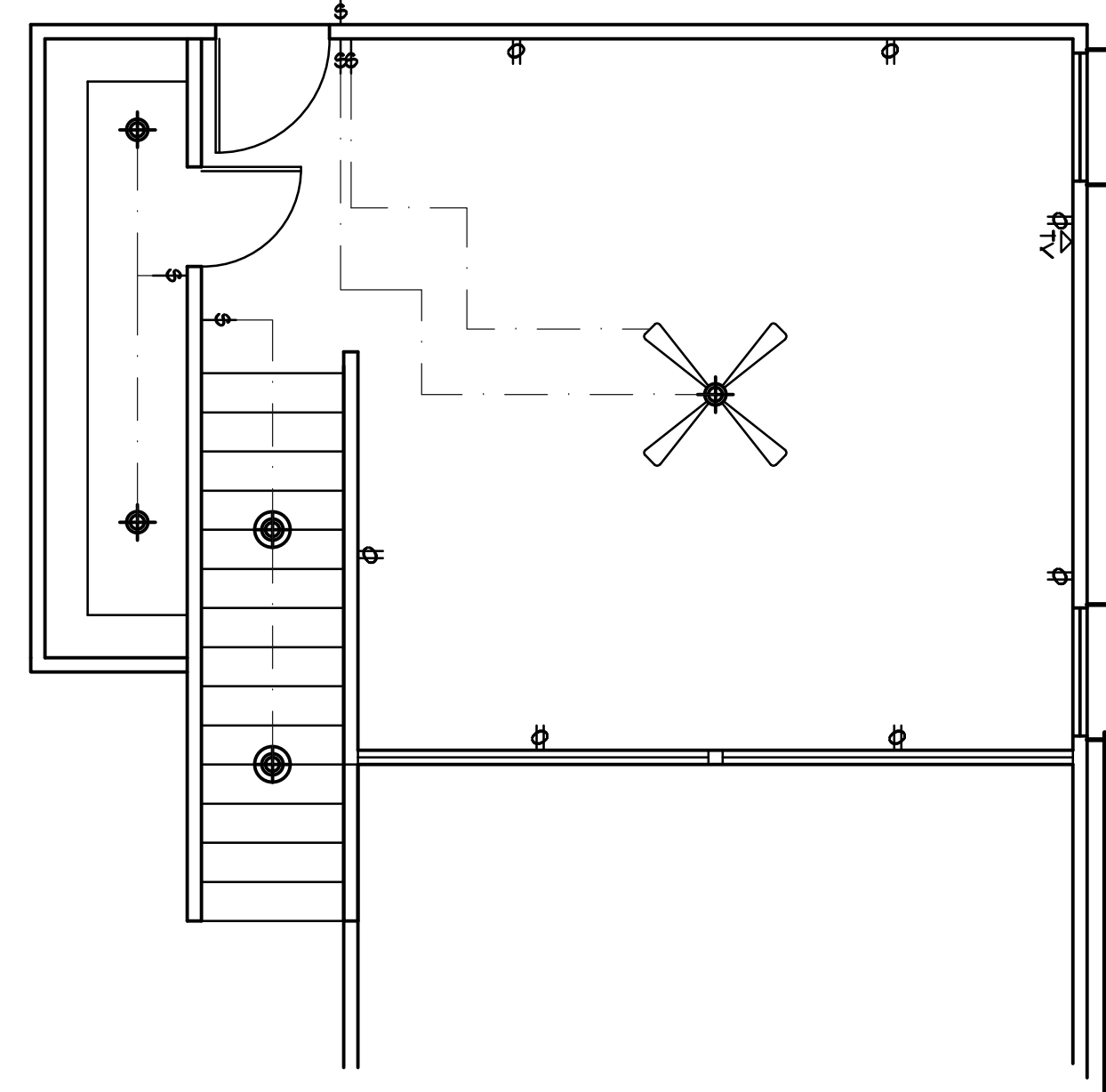
**BRACING PLAN**

SCALE: 1/4" = 1'-0"



**2ND BRACING PLAN**

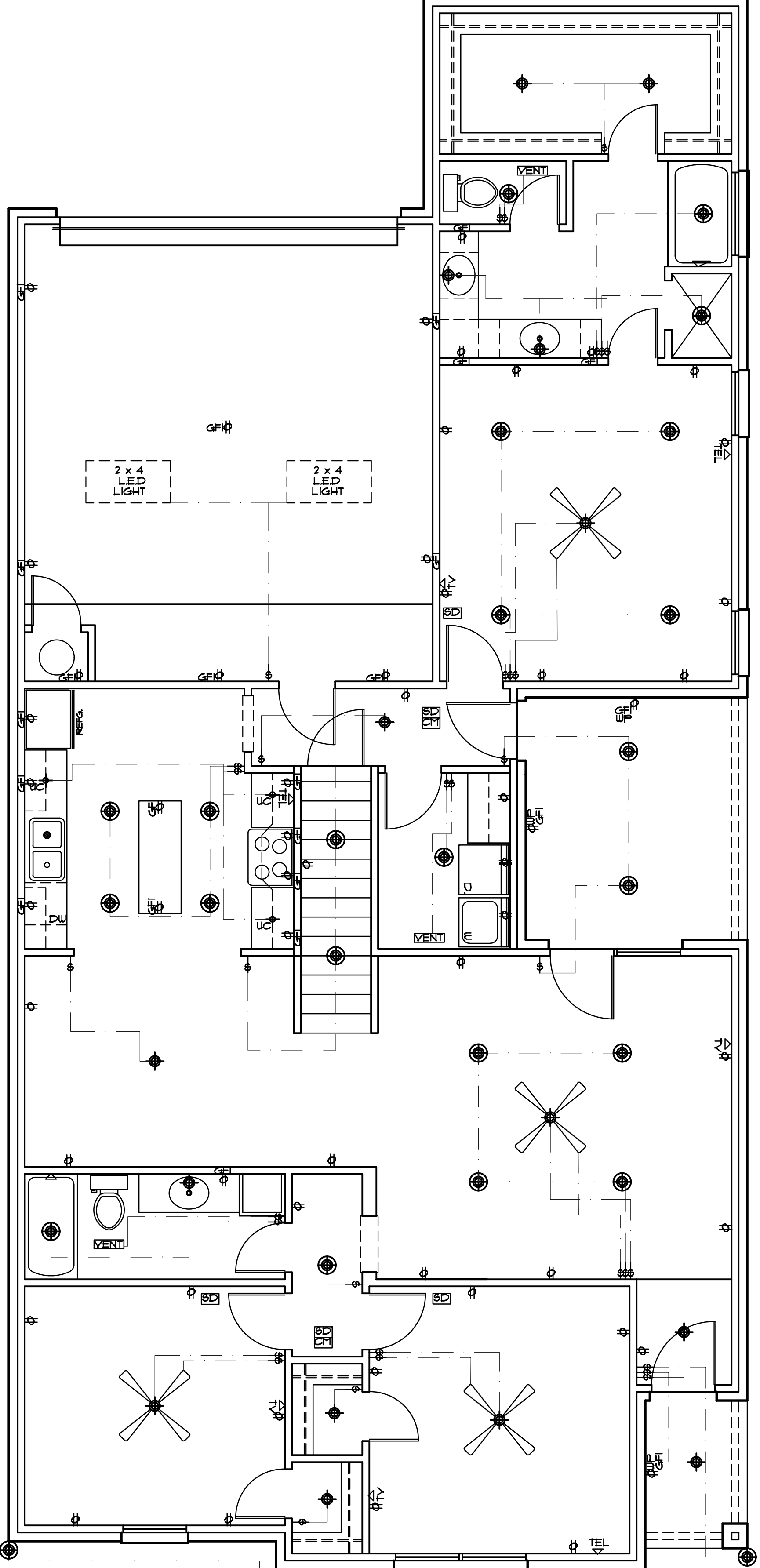
SCALE: 1/4" = 1'-0"



**2ND ELECTRICAL PLAN**

SCALE: 1/4" = 1'-0"

LEGEND	
	CEILING FAN
	CEILING FAN W/ LIGHT KIT
	2 X 4 LED LIGHT
	VENT
	WATER PROOF RECEPTACLE
	GFI
	INTERRUPT RECEPTACLE
	COAXIAL CABLE
	TELEPHONE
	SMOKE DETECTOR
	CARBON MONOXIDE
	10 RECEPTACLE
	220 RECEPTACLE
	LIGHT SWITCH
	3-WAY SWITCH
	RECESSED CANISTER LIGHT
	CHANDELEIR
	SCONCE
	UNDERCABINET LIGHTS
	CHRISTMAS PLUG
	FLOOR PLUG
	MOTION LIGHT
	EYEBALL LIGHT



**ELECTRICAL PLAN**

SCALE: 1/4" = 1'-0"

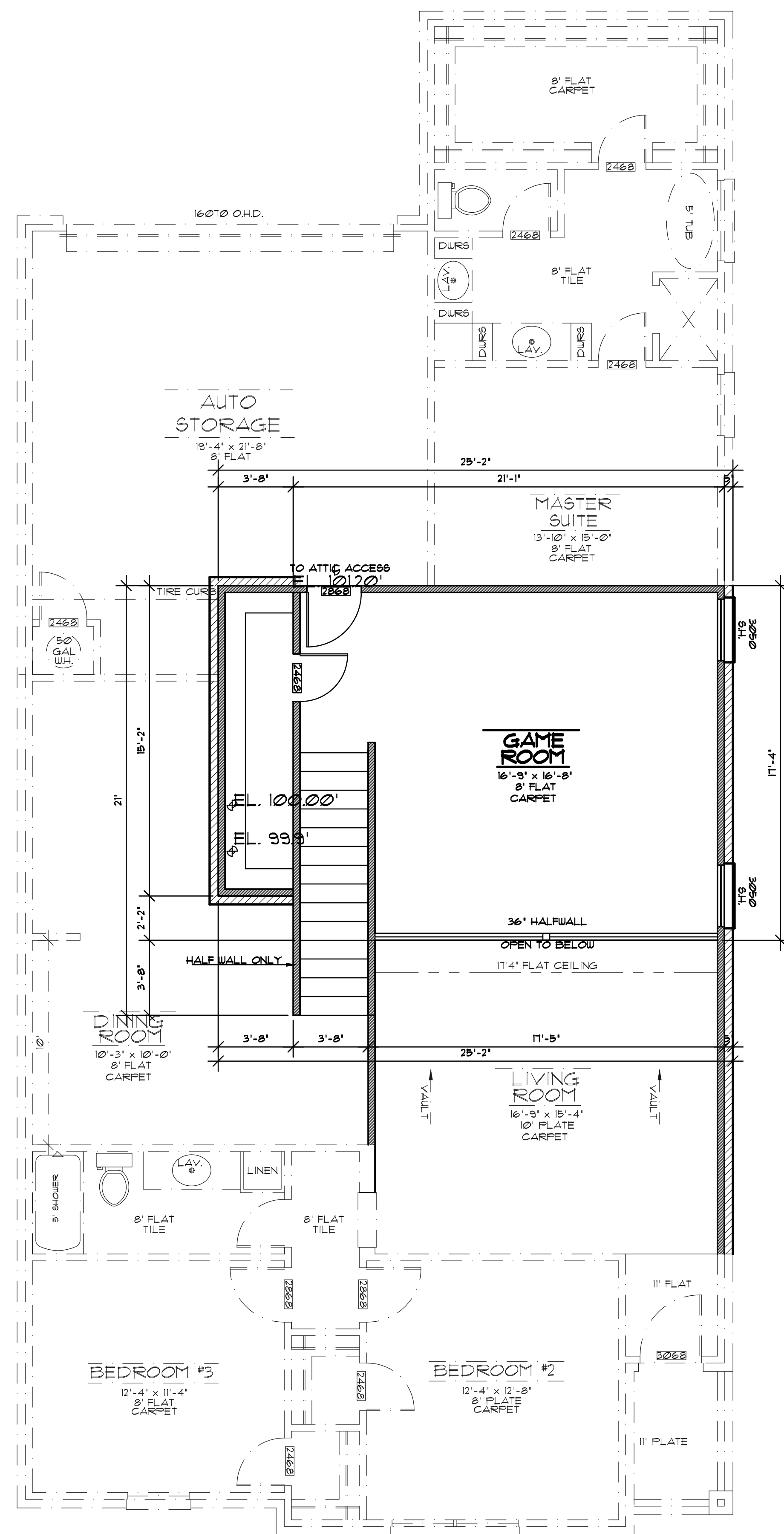
DRAWN BY:  
**RENAISSANCE DESIGN**  
 ZACHARY SALDIVAR  
 6666 AMARILLO BLVD. W  
 AMARILLO, TX  
 79106 (806)510-3489

A NEW RESIDENCE BY:  
**B&M AMARILLO HOMES**  
 1605 WOODFORD AVE.  
 AMARILLO, TX

REVISIONS:

PAGE\*  
 A4

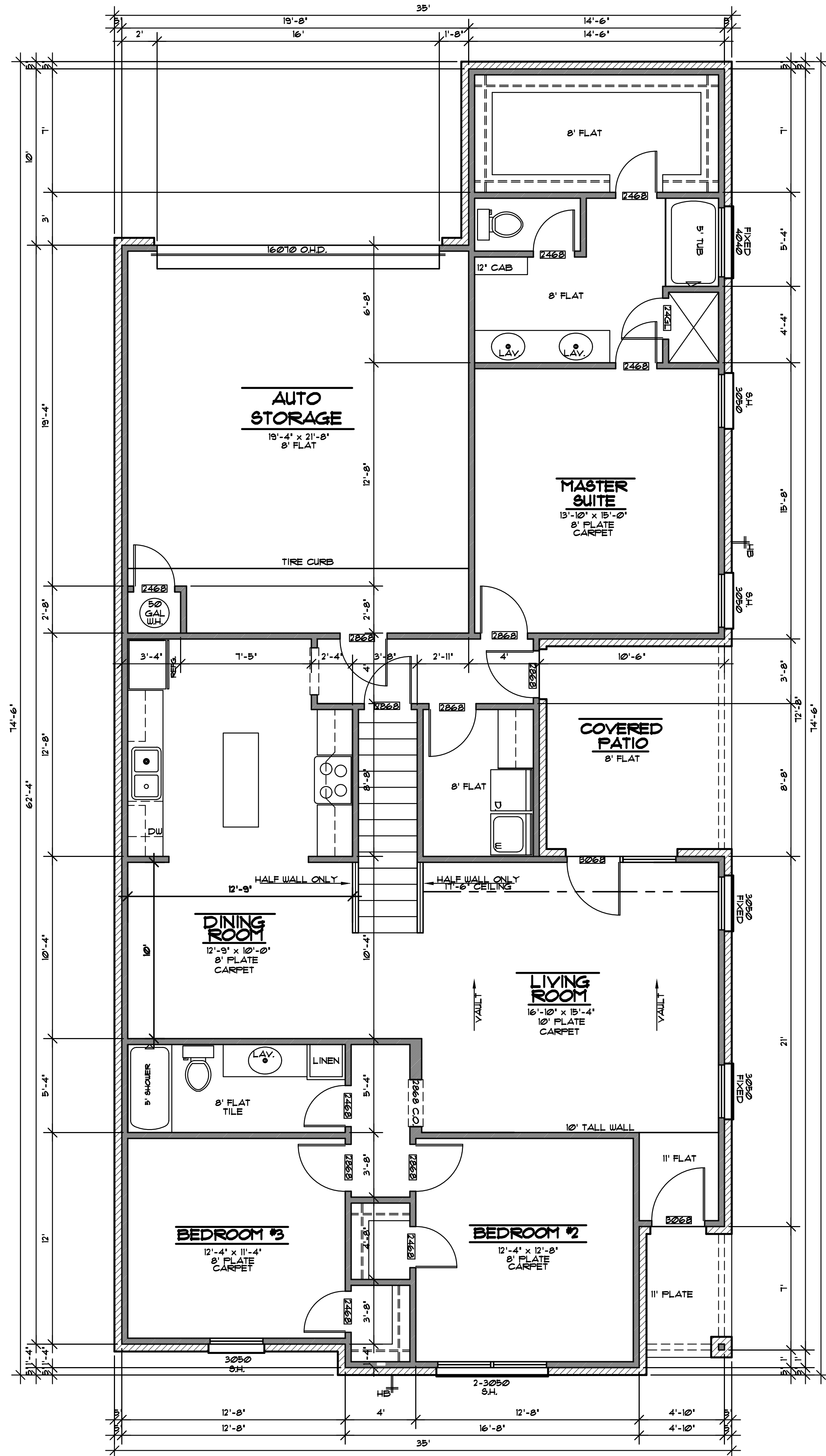
PLAN #1268-1G4  
 DATE 4/22/22



**2ND FLOOR PLAN**

SCALE: 1/4" = 1'-0"

AREAS:	
FIRST FLOOR L.A.	1754 SQ. FT.
SECOND FLOOR L.A.	366 SQ. FT.
GARAGE	450 SQ. FT.
COVERED PORCH	34 SQ. FT.
SIDE PATIO	120 SQ. FT.
TOTAL UNDER ROOF	2724 SQ. FT.
ALL AREAS APPROXIMATE	



**1 FLOOR PLAN**

SCALE: 1/4" = 1'-0"

**DRAWN BY:**  
**RENAISSANCE DESIGN**  
 ZACHARY SALDIYAR  
 6666 AMARILLO BLVD. W  
 AMARILLO, TX  
 79106 (806)510-3489

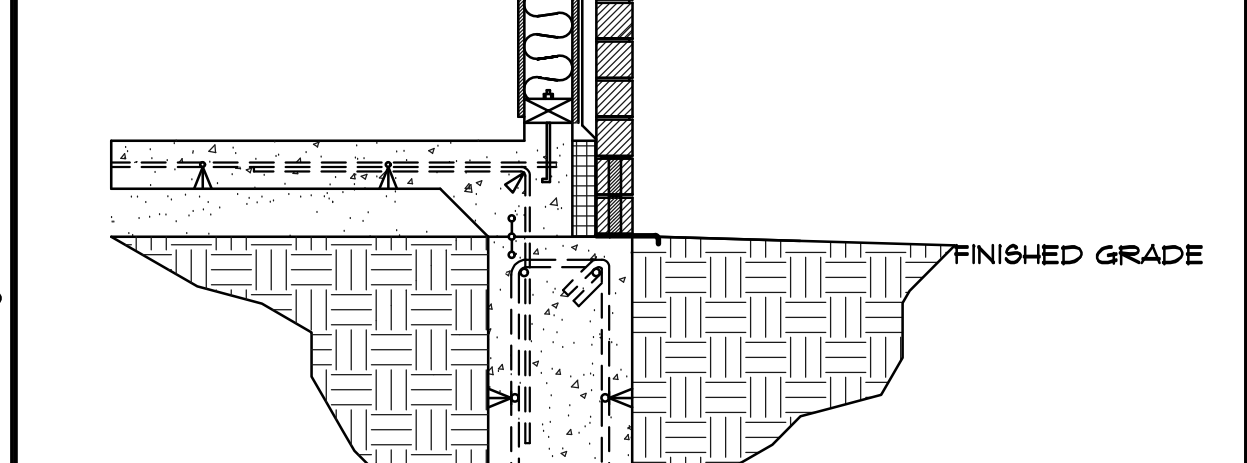
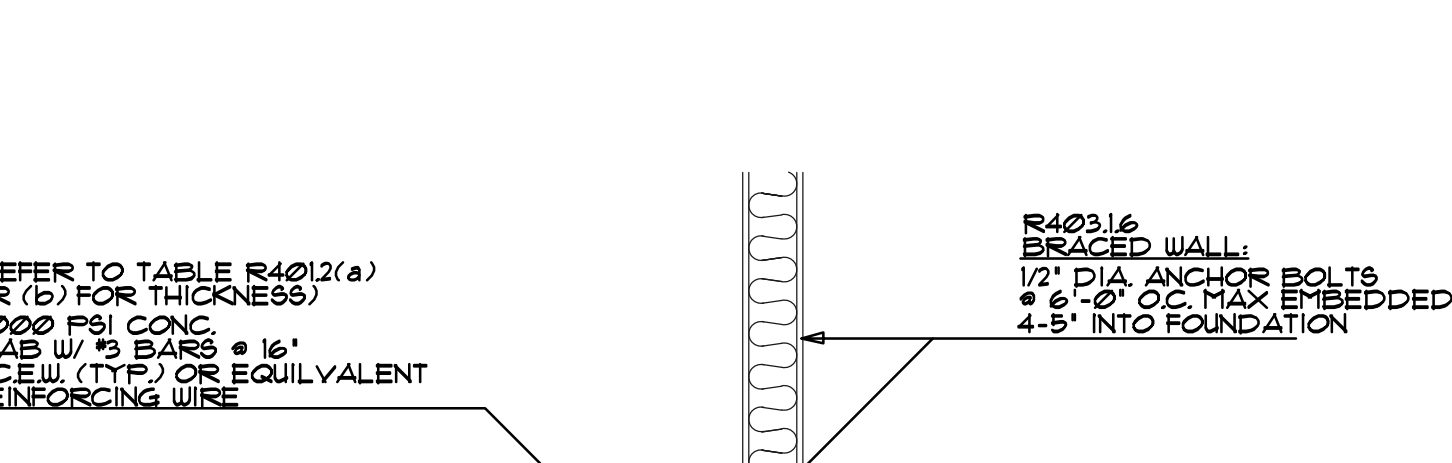
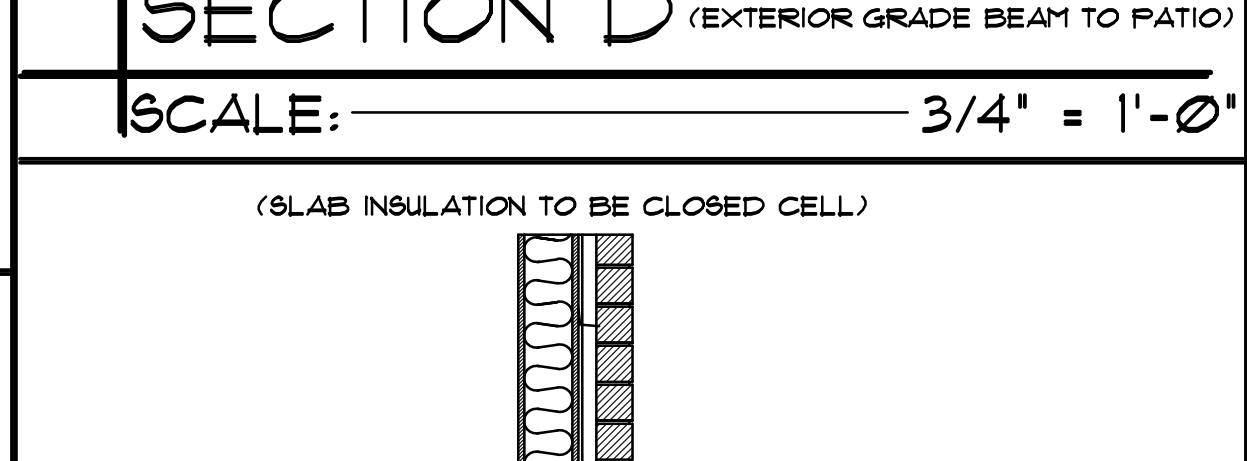
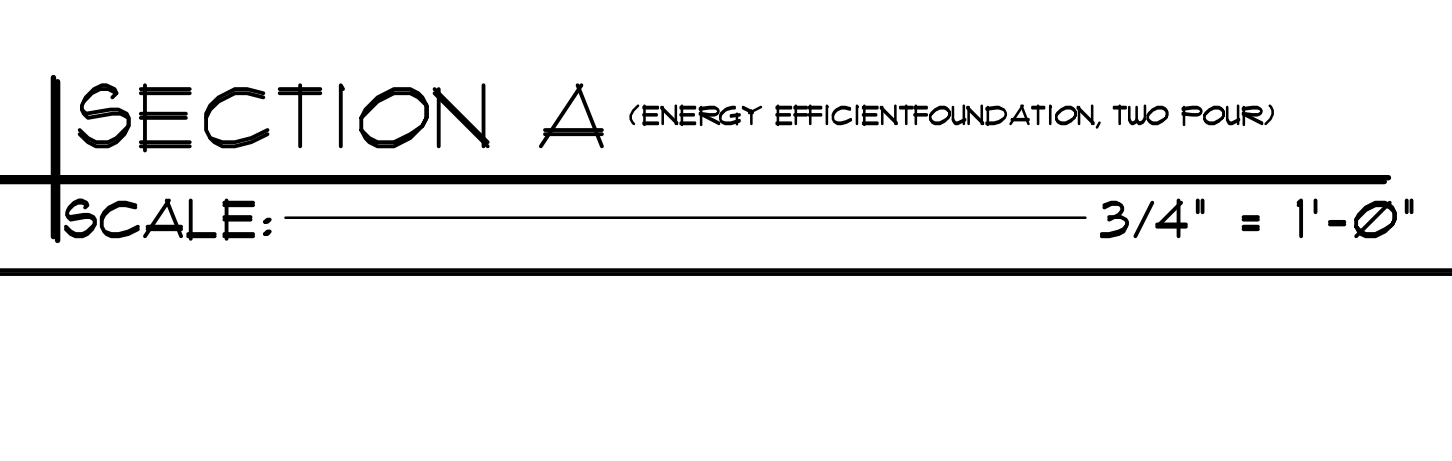
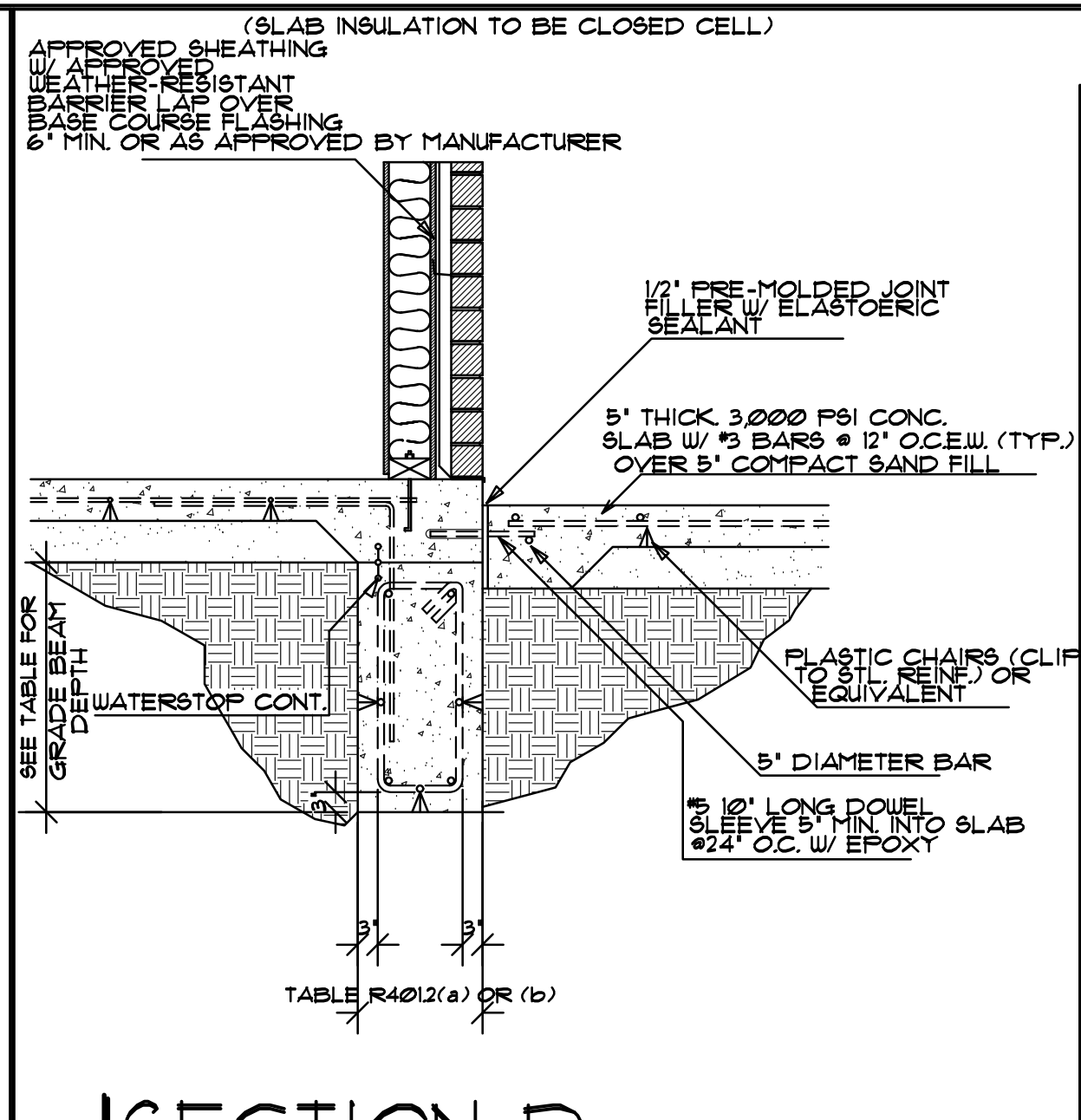
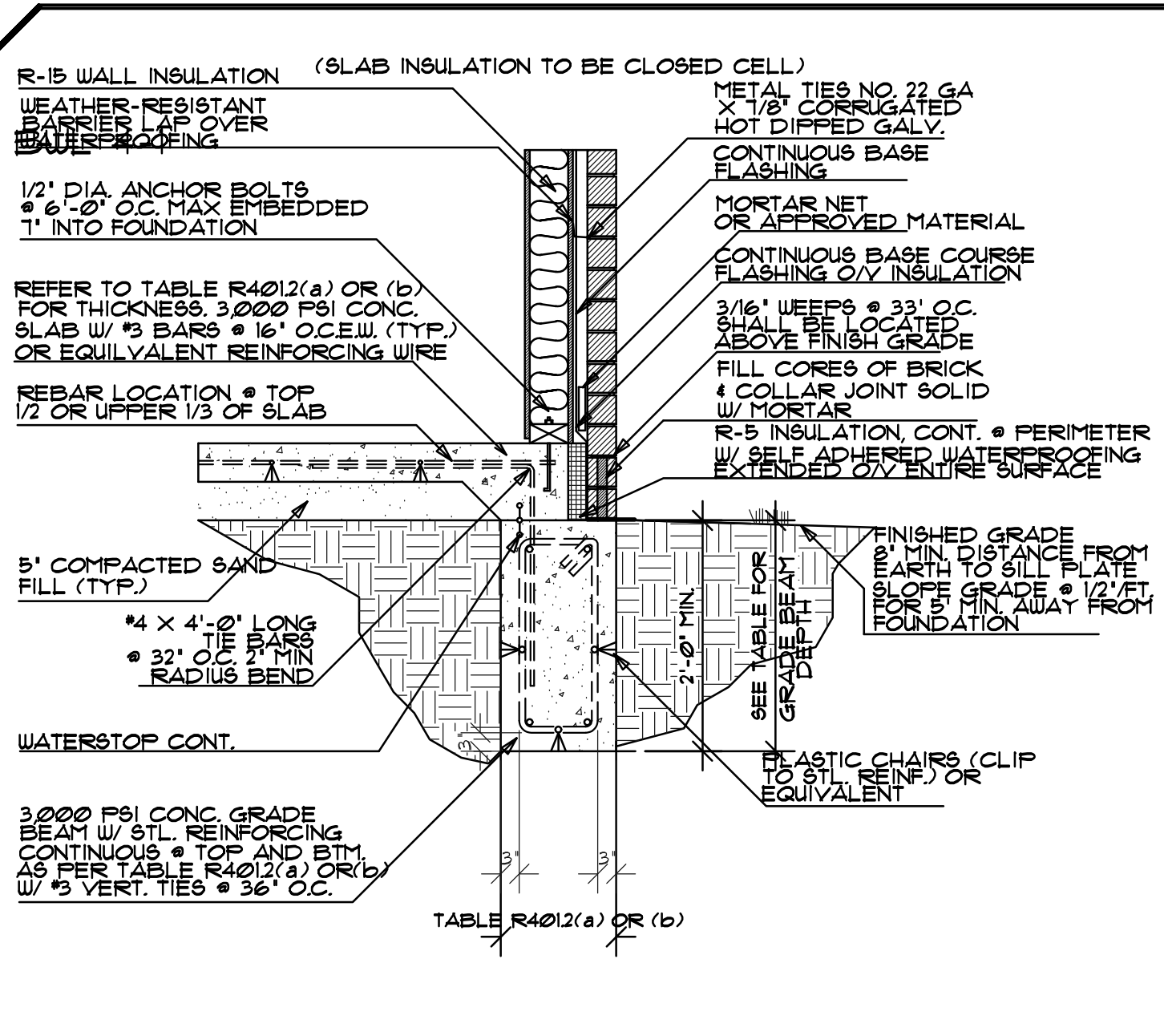
**A NEW RESIDENCE BY:**  
**B&M AMARILLO HOMES**  
 1605 WOODFORD AVE.  
 AMARILLO, TX

**REVISIONS:**

**PAGE#**  
 A5

PLAN #1268-1G4  
 DATE 4/22/22





MINIMUM AND EFFECTIVE LENGTHS FOR COMMON WALL BRACING  
INTERMITTENT METHODS

METHOD	DESCRIPTION	MINIMUM LENGTH					EFFECTIVE LENGTH*	NOTES
		8'	9'	10'	11'	12'		
L1B	LIT N BRACING	8'-0"	8'-0"	8'-0"	8'-0"	8'-0"	L	LIMITED TO TOP TWO STOREYS AND LIMITED TO LOW RISE AREAS
USP	WOOD STRUCTURAL PANEL	3'-6"	3'-6"	3'-6"	3'-6"	3'-0"	L	MINIMUM BRACE IS TYPICALLY 1/4" OR MORE THAN 1/4"
SFB	STRUCTURAL FIBREBOARD	3'-6"	3'-6"	3'-6"	3'-6"	3'-0"	L	MINIMUM BRACE IS TYPICALLY 1/4" OR MORE THAN 1/4"
GB	GYP BOARD	4'-0"	4'-0"	4'-0"	4'-0"	4'-0"	L	MINIMUM BRACE IS TYPICALLY 1/4" OR MORE THAN 1/4"
ABU	ALUMINUM BRACING	8'-0"	8'-0"	8'-0"	8'-0"	8'-0"	L	MINIMUM BRACE IS TYPICALLY 1/4" OR MORE THAN 1/4"
PFH	INTERMITTENT PORTAL FRAME AT GARAGE	2'-0"	2'-0"	2'-0"	2'-0"	2'-0"	L	LIMITED TO 20' MAX. HEIGHT AND 20' MAX. SPAN

MINIMUM AND EFFECTIVE LENGTHS FOR COMMON WALL BRACING  
CONTINUOUS METHODS:

METHOD	DESCRIPTION	MINIMUM LENGTH					EFFECTIVE LENGTH*	NOTES
		8'	9'	10'	11'	12'		
CS-USP	CONTINUOUS BRACING WOOD STRUCTURAL PANEL	8'-0"	8'-0"	8'-0"	8'-0"	8'-0"	L	MINIMUM BRACE IS TYPICALLY 1/4" OR MORE THAN 1/4"
CS-G	CONTINUOUS BRACING GYP BOARD	8'-0"	8'-0"	8'-0"	8'-0"	8'-0"	L	LIMITED TO APPROXIMATELY 10' MAX. HEIGHT AND 10' MAX. SPAN
CS-PF	CONTINUOUS BRACING PORTAL FRAME	2'-0"	2'-0"	2'-0"	2'-0"	2'-0"	L	LIMITED TO 20' MAX. HEIGHT AND 20' MAX. SPAN

GENERAL NOTES:  
THE CONTRACTOR SHALL BE RESPONSIBLE FOR CHECKING THE PLANS AND IS TO NOTIFY THE DESIGNER OF ANY ERRORS OR OMISSIONS PRIOR TO THE START OF CONSTRUCTION.  
ALL WORK IS TO COMPLY WITH THE 2015 INTERNATIONAL RESIDENTIAL CODE AND ANY APPLICABLE STATE, COUNTY, OR LOCAL REGULATION.  
WRITTEN DIMENSIONS HAVE PRECEDENCE OVER SCALED DIMENSIONS.  
ALL EXTERIOR WALL OPENINGS & BEARING WALL OPENINGS TO HAVE HEADERS IN ACCORDANCE WITH 2015 IRC.  
EACH BEDROOM TO HAVE A MINIMUM WINDOW OPENING OF 5.7 SQ. FT. WITH A MINIMUM WIDTH OF 20" AND A SILL LESS THAN 44" OFF THE FLOOR.  
ALL TUB AND SHOWER ENCLOSURES ARE TO BE GLAZED WITH SAFETY GLAZING.  
SMOKE DETECTORS (SEE PLAN FOR LOCATION) MUST BE INSTALLED IN ACCORDANCE WITH THE 2015 IRC. DETECTORS MUST RECEIVE THEIR PRIMARY POWER BY DIRECT WIRING INTO THE HOUSE CURRENT AND BE EQUIPPED WITH A BATTERY BACKUP.  
PROVIDE VACUUM BREAKERS AT ANY WATER SUPPLY OUTLET WITH A HOSE CONNECTION AT OUTLETS WHICH COULD BE SUBMERGED AND ARE NOT PROTECTED BY AN AIR GAP.  
R315.0 CARBON MONOXIDE ALARMS. FOR NEW CONSTRUCTION AN APPROVED CARBON MONOXIDE ALARM SHALL BE INSTALLED OUTSIDE EACH SEPARATE SLEEPING AREA IN THE IMMEDIATE VICINITY OF THE BEDROOMS IN DWELLING UNITS WITHIN WHICH FUEL FIRED APPLIANCES ARE INSTALLED AND IN DWELLING UNITS THAT HAVE ATTACHED GARAGES. APPROVED ALARMS SHALL BE INSTALLED IN ACCORDANCE WITH MANUFACTURER'S INSTALLATION INSTRUCTIONS OR LOCATED ON THE WALL AT A HEIGHT 42" TO 90" ABOVE FLOOR, AVOIDING LOCATIONS NEAR HEATING/COOLING VENTS OR AREAS WHICH PROVIDE TURBULENT AIRFLOW, AND MINIMUM 5' AWAY FROM TOILETS OR AREAS OF HIGH HUMIDITY. AVOID INSTALLING CO ALARMS IN KITCHENS OR ABOVE FUEL-BURNING APPLIANCES.

TABLE R301.5  
MINIMUM UNIFORMLY DISTRIBUTED LIVE LOADS  
(IN POUNDS PER SQUARE FOOT)

DESCRIPTION	LIVE LOAD
UNINHABITABLE ATTICS WITHOUT STORAGE <sup>a</sup>	10
UNINHABITABLE ATTICS WITH LIMITED STORAGE <sup>b</sup>	20
HABITABLE ATTICS WITH FIXED STAIRS	30
BALCONIES (EXTERIOR) AND DECKS <sup>c</sup>	40
FIRE ESCAPES	40
GUARDRAILS AND HANDRAILS <sup>d</sup>	20 <sup>h</sup>
GUARDRAILS INFILL COMPONENTS <sup>f</sup>	50 <sup>h</sup>
PASSENGER VEHICLE GARAGES <sup>a</sup>	50 <sup>a</sup>
ROOMS OTHER THAN SLEEPING ROOMS	40
SLEEPING ROOMS	30
STAIRS	40 <sup>c</sup>

TABLE R401.2(a)  
FOR USE WITH SOLA CONTAINING EFFECTIVE PLASTICITY INDEX OF 3-20<sup>2</sup>

AREA OF TOTAL REINFORCEMENT (SQUARE FOOTAGE)	NUMBER OF STOREYS	DEPTH	MINIMUM LENGTH OF REINFORCEMENT	MINIMUM LENGTH OF REINFORCEMENT (TOP & BOTTOM) L & S	MINIMUM LENGTH OF REINFORCEMENT (TOP & BOTTOM) L & S	MINIMUM LENGTH OF REINFORCEMENT (TOP & BOTTOM) L & S
UP TO 2,400 SQ. FT.	1	24'	2	2-4	8/8	2-4
	2	24'	2	2-4	8/8	2-4
	3	24'	2	2-4	8/8	2-4
2,400-5,000 SQ. FT.	1	24'	2	2-4	8/8	2-4
	2	24'	2	2-4	8/8	2-4
	3	24'	2	2-4	8/8	2-4
5,000-9,000 SQ. FT.	1	24'	2	2-4	8/8	2-4
	2	24'	2	2-4	8/8	2-4
	3	24'	2	2-4	8/8	2-4
OVER 9,000 SQ. FT.	1	24'	2	2-4	8/8	2-4
	2	24'	2	2-4	8/8	2-4
	3	24'	2	2-4	8/8	2-4

TABLE R602.4.2  
CEILING JOIST SPANS FOR COMMON LUMBER SPECIES  
(UNINHABITABLE ATTICS WITH LIMITED STORAGE, LIVE LOAD = 20 PSF, L/D = 240)

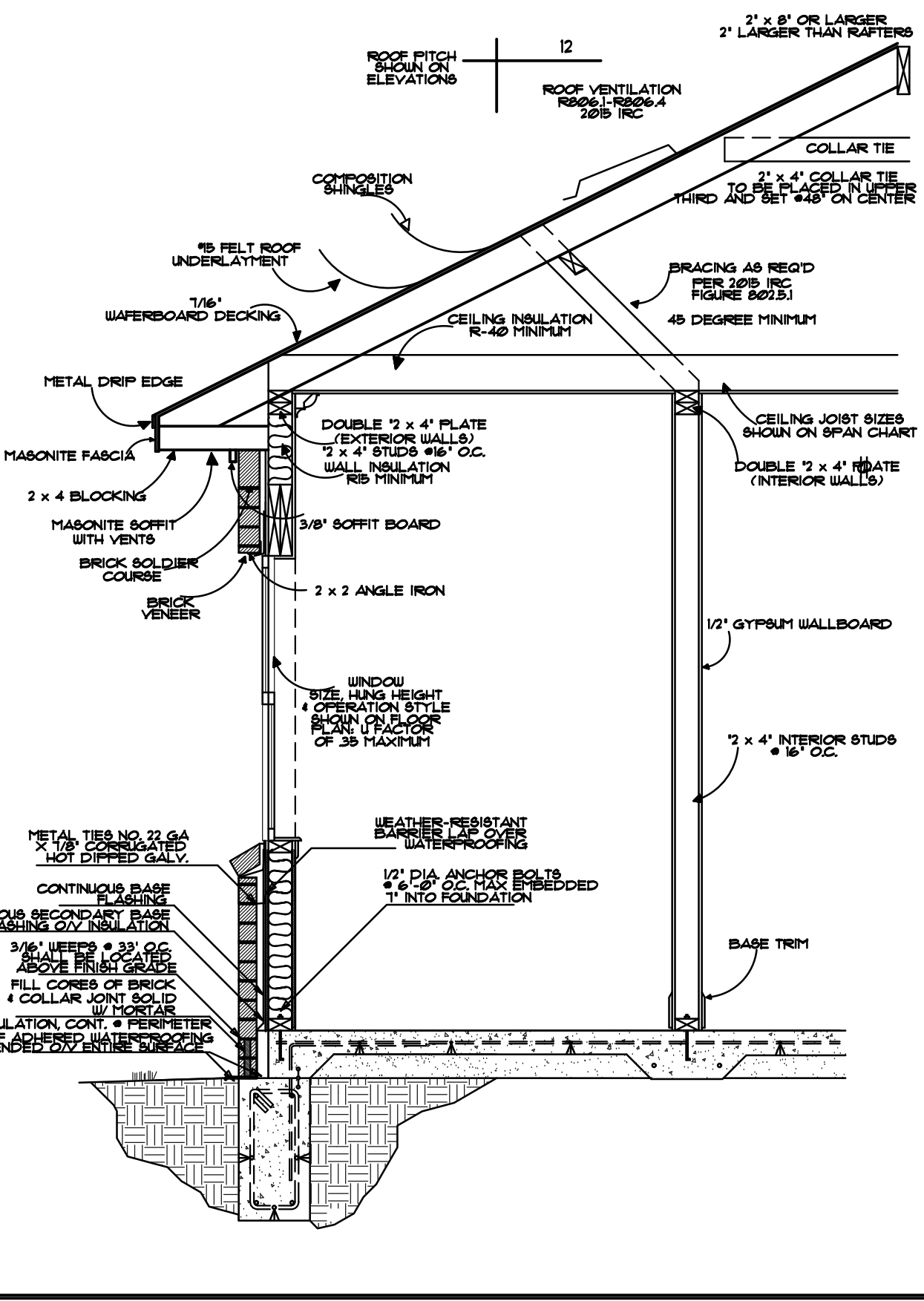
SPECIES AND GRADE	2 x 4	2 x 6	2 x 8	2 x 10
*2 HEAVY FIR	12'-0"	14'-0"	16'-0"	18'-0"

TABLE R602.4.1  
CEILING JOIST SPANS FOR COMMON LUMBER SPECIES  
(UNINHABITABLE ATTICS WITHOUT STORAGE, LIVE LOAD = 10 PSF, L/D = 240)

SPECIES AND GRADE	2 x 4	2 x 6	2 x 8	2 x 10
*2 HEAVY FIR	12'-0"	14'-0"	16'-0"	18'-0"

TABLE R602.4.3  
RAFTER SPANS FOR COMMON LUMBER SPECIES  
(ROOF LIVE LOAD = 20 PSF, CEILING ATTACHED TO RAFTERS, L/D = 240)

SPECIES AND GRADE	2 x 4	2 x 6	2 x 8	2 x 10	2 x 12
*2 HEAVY FIR	12'-0"	14'-0"	16'-0"	18'-0"	20'-0"



DRAWN BY:  
RENAISSANCE DESIGN  
ZACHARY SALDIYAR  
AMARILLO BLVD. W  
6666 AMARILLO, TX  
19106 (806) 510-3489

A NEW RESIDENCE BY:  
B&M AMARILLO HOMES  
1605 WOODFORD AVE.  
AMARILLO, TX

REVISIONS:

PAGE:  
A6  
PLAN #1268-1G14  
DATE 4/22/22